

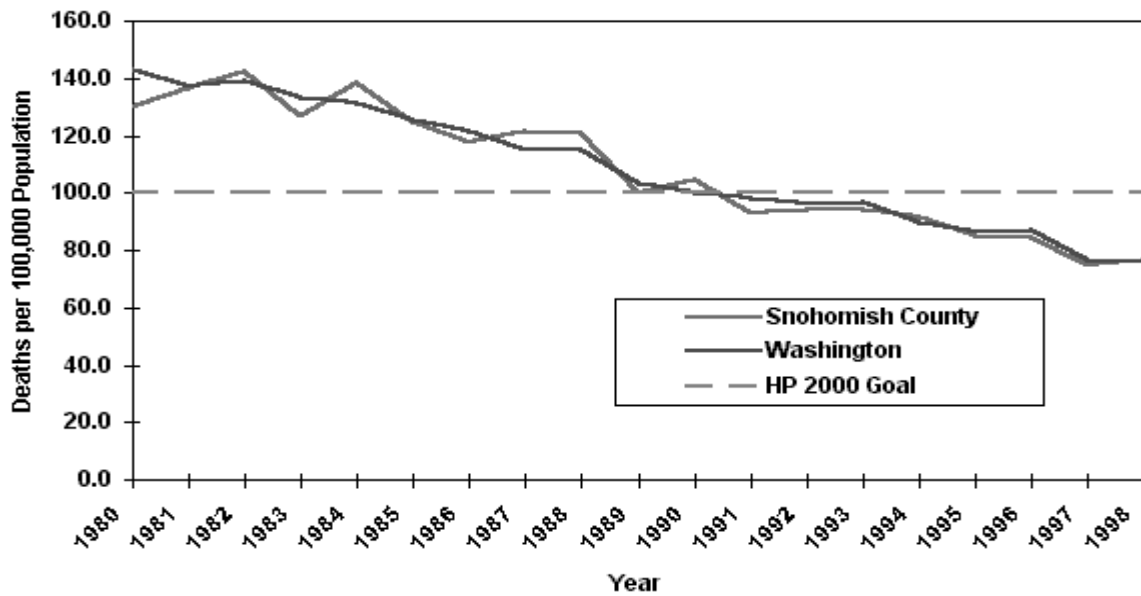
Section IV

Health

Health Section

- **Mortality Rates From Coronary Heart Disease**
- **Age-Adjusted Mortality Rates From Stroke**
- **Age-Adjusted Mortality Rates From Suicide**
- **Age-Adjusted Mortality Rates From Homicide**
- **Age-Adjusted Mortality From All Cancers**
- **Age-Specific Fertility Rates, Females 15-17**
- **“Low Birth Weight” Births**
- **Self-Reported Maternal Smoking During Pregnancy**
- **Self-Reported Maternal Alcohol Use During Pregnancy**
- **Infant Mortality Rates**
- **Proportion of Mothers Giving Birth Under the Age of 18 Years**
- **Proportion of Women Receiving First Trimester Prenatal Care**
- **A Comparison of Recent Indicators with Year 2000 and Year 2010 Goals**
- **Access To Health Care**
- **Youth Substance Abuse Trends**

Mortality From Coronary Heart Disease
Snohomish County & Washington State, 1980 - 1998**



Mortality rates from Coronary Heart Disease have been declining since 1980. Rates for Snohomish County and the State are similar, and both have achieved the *Healthy People 2000* objective of no more than 100 deaths per 100,000 population.

<u>Year</u>	<u>Snohomish County</u>				<u>Washington</u>		
	<u>Rate*</u>	<u>95% C. I.</u>	<u>Deaths</u>	<u>Population</u>	<u>Rate*</u>	<u>Deaths</u>	<u>Population</u>
1980	129.9	(119.6, 140.1)	607	337,720	142.9	9,522	4,132,156
1981	136.5	(125.9, 147)	634	349,596	137.1	9,434	4,229,277
1982	142.4	(131.9, 152.8)	696	357,747	138.9	9,795	4,276,549
1983	126.7	(116.9, 136.6)	636	363,552	133.2	9,682	4,307,247
1984	138.6	(128.7, 148.5)	737	370,569	131.5	9,835	4,354,068
1985	125.2	(115.9, 134.5)	695	381,094	125.8	9,667	4,415,785
1986	117.8	(108.9, 126.7)	672	393,097	121.9	9,529	4,462,213
1987	121.5	(112.6, 130.4)	725	406,093	115.1	9,334	4,527,099
1988	120.7	(111.9, 129.6)	728	422,388	114.8	9,594	4,616,884
1989	100.1	(92.4, 107.7)	676	444,460	103.4	9,039	4,728,079
1990	104.7	(96.9, 112.5)	725	465,642	100.4	9,063	4,866,692
1991	92.7	(85.6, 99.9)	672	483,989	98.4	8,984	5,000,392
1992	94.2	(87, 101.4)	704	494,291	96.2	9,038	5,116,711
1993	94.3	(87.3, 101.2)	744	507,903	97.0	9,494	5,240,909
1994	91.7	(84.9, 98.6)	729	516,501	90.0	8,943	5,334,394
1995	85.0	(78.6, 91.4)	739	525,596	86.3	9,013	5,428,569
1996	84.4	(78.1, 90.6)	766	538,100	87.0	9,330	5,516,805
1997	75.0	(69.3, 80.8)	713	551,636	76.7	8,350	5,608,100
1998	76.6	(70.7, 82.5)	723	568,099	75.9	8,532	5,685,307

*Rate per 100,000 Population.

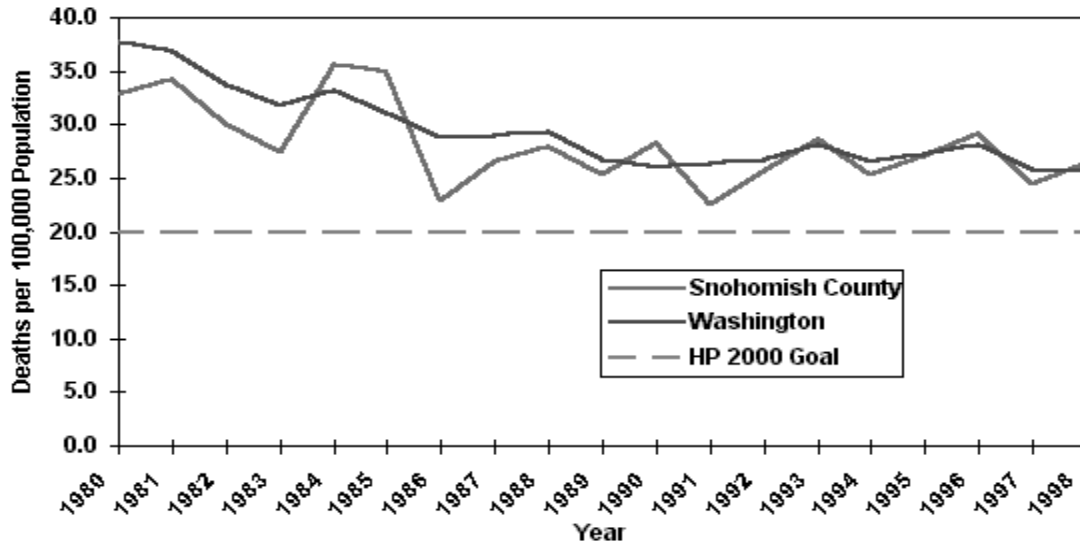
** - ICD-9 Codes 410-414, 402, 429.2.

Data Sources:

Death Certificate Data: Washington State Department of Health, Center for Health Statistics.

Population Estimates and Projections: 1990-2002 Department of Social and Health Services, Washington State Adjusted Population Estimates, April, 1999. 1980-1989 Population Estimates are based on estimates by the Washington State Office of Financial Management

Age-Adjusted Mortality Rates From Stroke
Snohomish County & Washington State, 1980 - 1998**



Mortality rates from stroke fell during the 1980s at both the County and State levels. However, the data indicate a stabilization of the rates during the 1990s, if not a slight increase. Neither Snohomish County nor Washington State has achieved the *Healthy People 2000* objective of no more than 20 deaths per 100,000 population.

Year	Snohomish County				Washington		
	Rate*	95% C. I.	Deaths	Population	Rate*	Deaths	Population
1980	32.9	(27.7, 38)	161	337,720	37.7	2,845	4,132,156
1981	34.3	(29.2, 39.4)	183	349,596	36.9	2,840	4,229,277
1982	30.0	(25.5, 34.5)	173	357,747	33.7	2,650	4,276,549
1983	27.4	(23.1, 31.7)	160	363,552	31.8	2,584	4,307,247
1984	35.7	(30.7, 40.8)	200	370,569	33.2	2,795	4,354,068
1985	35.0	(30.3, 39.7)	217	381,094	31.1	2,709	4,415,785
1986	22.9	(19.1, 26.7)	149	393,097	28.8	2,582	4,462,213
1987	26.5	(22.4, 30.6)	171	406,093	29.0	2,655	4,527,099
1988	28.0	(23.9, 32.1)	190	422,388	29.4	2,827	4,616,884
1989	25.3	(21.7, 28.9)	195	444,460	26.7	2,683	4,728,079
1990	28.3	(24.5, 32.2)	221	465,642	26.1	2,719	4,866,692
1991	22.6	(19.3, 25.9)	193	483,989	26.3	2,806	5,000,392
1992	25.7	(22.1, 29.3)	218	494,291	26.7	2,946	5,116,711
1993	28.6	(24.9, 32.2)	257	507,903	28.2	3,203	5,240,909
1994	25.4	(22, 28.7)	242	516,501	26.6	3,142	5,334,394
1995	27.1	(23.7, 30.5)	266	525,596	27.2	3,299	5,428,569
1996	29.1	(25.8, 32.5)	313	538,100	28.1	3,540	5,516,805
1997	24.4	(21.4, 27.4)	276	551,636	25.8	3,375	5,608,100
1998	26.4	(23.2, 29.6)	292	568,099	25.7	3,414	5,685,307

*Rate per 100,000 Population

** ICD-9 codes 430-438

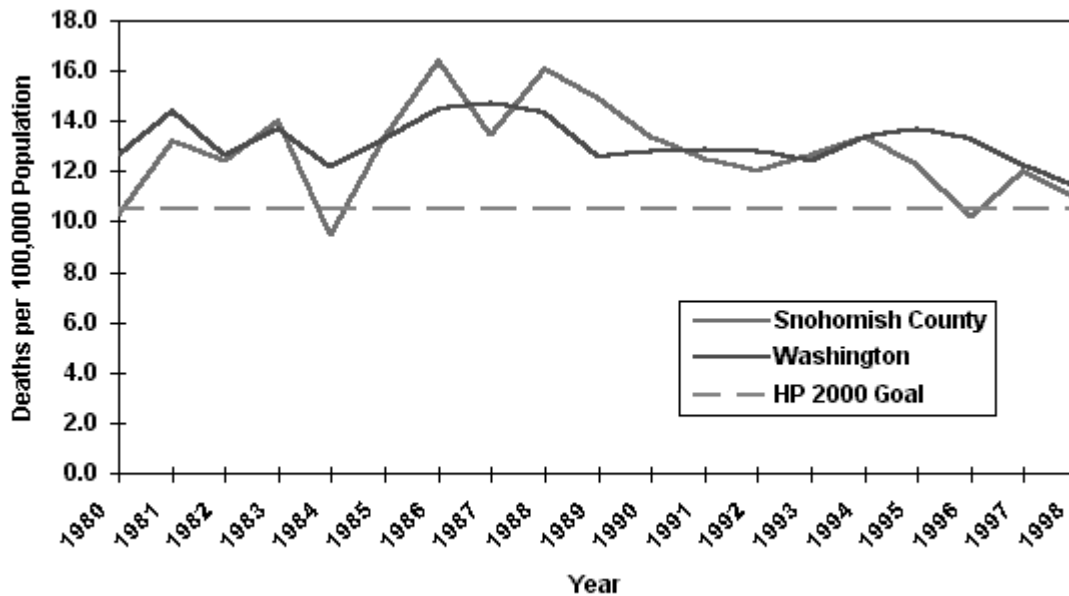
Data Sources:

Death Certificate Data: Washington State Department of Health, Center for Health Statistics.

Population Estimates and Projections: 1990-2002 Department of Social and Health Services, Washington State Adjusted Population Estimates, April 1999. 1980-1989 Population Estimates are based on estimates by the Washington State Office of Financial Management.

Age-Adjusted Mortality from Suicide**

Snohomish County & Washington State, 1980 - 1998



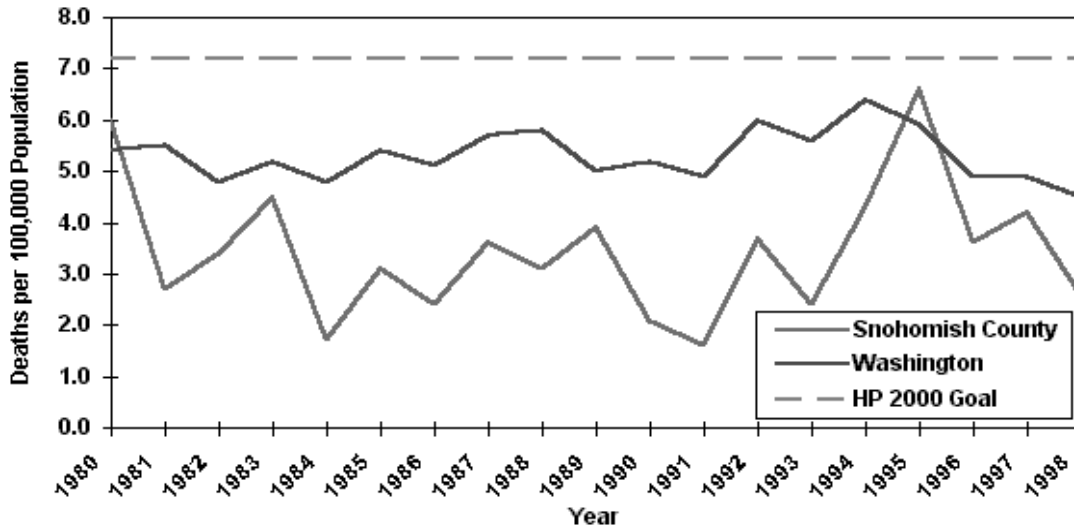
Suicide rates in both Snohomish County and Washington State have remained fairly constant since 1980. Although both show considerable year-to-year variation, the mortality rates for 1998 are very similar to those for 1980 in both areas. Although the Snohomish County rates have occasionally dipped below the *Healthy People 2000* objective of no more than 10.5 deaths per 100,000 population, the data indicate that the County has suicide rates that are generally higher than the objective. Washington State's suicide rate is also consistently higher than the *Healthy People 2000* objective.

Year	Snohomish County				Washington		
	Rate*	95% C.I.	Deaths	Population	Rate*	Deaths	Population
1980	10.3	(6.9, 13.7)	36	337,720	12.7	554	4,132,156
1981	13.2	(9.4, 17)	47	349,596	14.4	639	4,229,277
1982	12.4	(8.7, 16.2)	43	357,747	12.7	570	4,276,549
1983	14.0	(10.1, 17.9)	51	363,552	13.7	621	4,307,247
1984	9.5	(6.3, 12.6)	37	370,569	12.2	577	4,354,068
1985	13.4	(9.6, 17.1)	52	381,094	13.3	627	4,415,785
1986	16.4	(12.4, 20.4)	67	393,097	14.5	690	4,462,213
1987	13.5	(9.9, 17.1)	56	406,093	14.7	708	4,527,099
1988	16.1	(12.2, 20)	70	422,388	14.3	718	4,616,884
1989	14.9	(11.3, 18.6)	68	444,460	12.6	646	4,728,079
1990	13.4	(10.1, 16.7)	66	465,642	12.8	678	4,866,692
1991	12.5	(9.3, 15.8)	60	483,989	12.9	688	5,000,392
1992	12.0	(8.9, 15.2)	62	494,291	12.8	700	5,116,711
1993	12.7	(9.5, 15.9)	65	507,903	12.4	695	5,240,909
1994	13.4	(10.2, 16.7)	69	516,501	13.4	759	5,334,394
1995	12.3	(9.3, 15.3)	69	525,596	13.7	794	5,428,569
1996	10.2	(7.5, 13)	57	538,100	13.3	784	5,516,805
1997	12.0	(9, 14.9)	68	551,636	12.3	728	5,608,100
1998	10.9	(8.1, 13.8)	61	568,099	11.4	699	5,685,307

*Rate per 100,000 population

**ICD-9 codes E950-E959

Age-Adjusted Mortality Rates from Homicide
Snohomish County & Washington State, 1980 - 1998**



Homicide rates in Washington State have remained fairly stable since 1980. In Snohomish County, homicide is fairly rare, so that small changes in the number of murders cause large fluctuations in the rate of mortality (as occurred in 1995). Both Snohomish County and Washington State have consistently had homicide rates below the *Healthy People 2000* objective of no more than 7.2 homicides per 100,000.

<u>Year</u>	<u>Snohomish County</u>				<u>Washington</u>		
	<u>Rate*</u>	<u>95% C. I.</u>	<u>Deaths</u>	<u>Population</u>	<u>Rate*</u>	<u>Deaths</u>	<u>Population</u>
1980	6.0	(3.3, 8.6)	20	337,720	5.4	228	4,132,156
1981	2.7	(1, 4.4)	10	349,596	5.5	233	4,229,277
1982	3.4	(1.4, 5.3)	12	357,747	4.8	208	4,276,549
1983	4.5	(2.3, 6.7)	16	363,552	5.2	227	4,307,247
1984	1.7	(0.3, 3.2)	6	370,569	4.8	207	4,354,068
1985	3.1	(1.3, 4.9)	12	381,094	5.4	243	4,415,785
1986	2.4	(0.9, 3.8)	10	393,097	5.1	230	4,462,213
1987	3.6	(1.7, 5.5)	14	406,093	5.7	263	4,527,099
1988	3.1	(1.4, 4.7)	14	422,388	5.8	275	4,616,884
1989	3.9	(2.1, 5.6)	20	444,460	5.0	235	4,728,079
1990	2.1	(0.8, 3.4)	11	465,642	5.2	250	4,866,692
1991	1.6	(0.4, 2.9)	7	483,989	4.9	236	5,000,392
1992	3.7	(2, 5.5)	19	494,291	6.0	294	5,116,711
1993	2.4	(1, 3.8)	12	507,903	5.6	276	5,240,909
1994	4.3	(2.4, 6.2)	21	516,501	6.4	314	5,334,394
1995	6.6	(4.2, 9)	32	525,596	5.9	298	5,428,569
1996	3.6	(1.9, 5.4)	19	538,100	4.9	254	5,516,805
1997	4.3	(2.4, 6)	23	551,636	4.9	258	5,608,100
1998	2.6	(1.2, 4)	14	568,099	4.5	234	5,685,307

*Rate per 100,000 Population

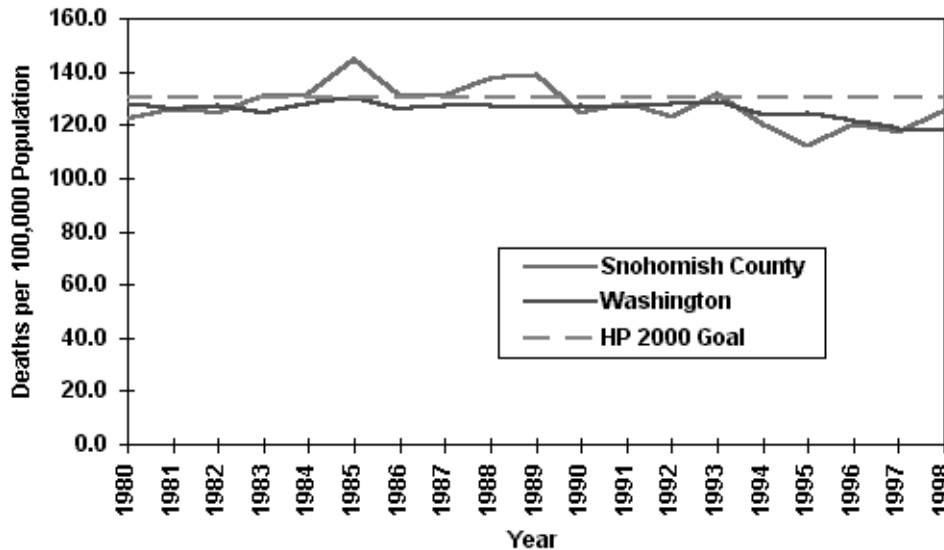
** ICD-9 codes E960-E969.

Data Sources:

Death Certificate Data: Washington State Department of Health, Center for Health Statistics.

Population Estimates and Projections: 1990-2002 Department of Social and Health Services, Washington State Adjusted Population Estimates, April 1999. 1980-1989 Population Estimates are based on estimates by the Washington State Office of Financial Management.

Age-Adjusted Mortality From All Cancers
Snohomish County & Washington State, 1980 - 1998**



Mortality from cancer has remained fairly constant since 1980 at both the County and State levels. While a recent decline in rates for Snohomish County is encouraging, it is too early to tell if this reflects a real trend in cancer deaths. Both Snohomish County and Washington State have achieved the *Healthy People 2000* objective of no more than 130 deaths per 100,000 population.

<u>Year</u>	<u>Snohomish County</u>				<u>Washington</u>		
	<u>Rate*</u>	<u>95% C. I.</u>	<u>Deaths</u>	<u>Population</u>	<u>Rate*</u>	<u>Deaths</u>	<u>Population</u>
1980	122.6	(111.6, 133.6)	474	337,720	128.1	6,987	4,132,156
1981	126.0	(115.1, 137)	507	349,596	125.8	7,061	4,229,277
1982	124.2	(113.6, 134.8)	525	357,747	127.6	7,354	4,276,549
1983	130.7	(120, 141.4)	568	363,552	124.6	7,353	4,307,247
1984	131.5	(120.8, 142.3)	576	370,569	128.3	7,709	4,354,068
1985	144.6	(133.6, 155.6)	662	381,094	130.0	8,006	4,415,785
1986	130.9	(120.6, 141.2)	620	393,097	126.2	7,995	4,462,213
1987	131.2	(121.1, 141.4)	654	406,093	127.1	8,204	4,527,099
1988	137.9	(127.8, 148)	717	422,388	127.5	8,396	4,616,884
1989	139.0	(129, 149)	752	444,460	126.9	8,710	4,728,079
1990	124.4	(115.1, 133.7)	706	465,642	127.7	8,993	4,866,692
1991	128.3	(119.1, 137.5)	771	483,989	126.8	9,193	5,000,392
1992	122.9	(114.1, 131.8)	761	494,291	128.1	9,547	5,116,711
1993	131.8	(122.8, 140.8)	854	507,903	128.6	9,912	5,240,909
1994	120.0	(111.6, 128.3)	825	516,501	124.1	9,803	5,334,394
1995	112.0	(104, 119.9)	789	525,596	124.4	10,022	5,428,569
1996	120.2	(112, 128.3)	860	538,100	121.6	10,162	5,516,805
1997	119.1	(109.1, 125)	869	551,636	118.9	10,065	5,608,100
1998	125.2	(117.1, 133.4)	943	568,099	118.1	10,269	5,685,307

*Rate per 100,000 Population

** ICD-9 codes 140-208

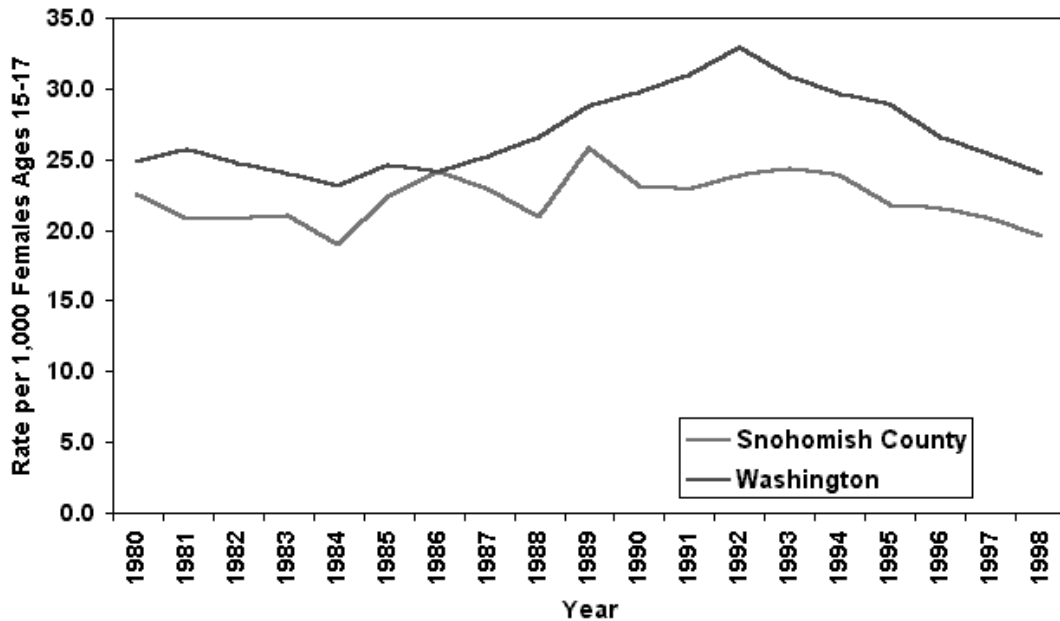
Data Sources:

Death Certificate Data: Washington State Department of Health, Center for Health Statistics.

Population Estimates and Projections: 1990-2002 Department of Social and Health Services, Washington State Adjusted Population Estimates, April 1999. 1980-1989 Population Estimates, Washington State Office of Financial Management.

Age-specific Fertility Rates, Females 15-17

Snohomish County & Washington State, 1980-1998



Year	Snohomish County			Washington		
	Rate*	95% C.I.	Births to Mothers 15-17	Rate*	Births to Mothers 15-17	Females 15-17
1980	22.6	(19.6, 25.9)	205	24.8	2,605	104,933
1981	20.8	(17.9, 24.0)	183	25.7	2,603	101,444
1982	20.8	(17.8, 24.1)	176	24.7	2,392	96,952
1983	21.0	(18.0, 24.4)	172	24.0	2,254	93,747
1984	19.0	(16.1, 22.2)	156	23.1	2,181	94,256
1985	22.4	(19.4, 25.8)	191	24.6	2,394	97,145
1986	24.2	(21.1, 27.6)	215	24.2	2,421	100,208
1987	22.9	(19.8, 26.2)	202	25.2	2,476	98,317
1988	20.9	(18.0, 24.2)	180	26.5	2,505	94,483
1989	25.9	(22.5, 29.5)	215	28.7	2,562	89,254
1990	23.1	(20.0, 26.6)	195	29.7	2,682	90,253
1991	22.9	(19.8, 26.3)	200	31.0	2,838	91,568
1992	23.9	(20.8, 27.2)	218	32.9	3,124	94,969
1993	24.4	(21.4, 27.7)	232	30.9	3,048	98,789
1994	23.9	(21.0, 27.2)	237	29.6	3,042	102,661
1995	21.8	(19.0, 24.8)	228	28.8	3,121	108,292
1996	21.5	(18.9, 24.4)	239	26.6	3,033	114,026
1997	20.8	(18.2, 23.6)	237	25.3	2,968	117,258
1998	19.5	(17.1, 22.2)	230	24.0	2,867	119,532

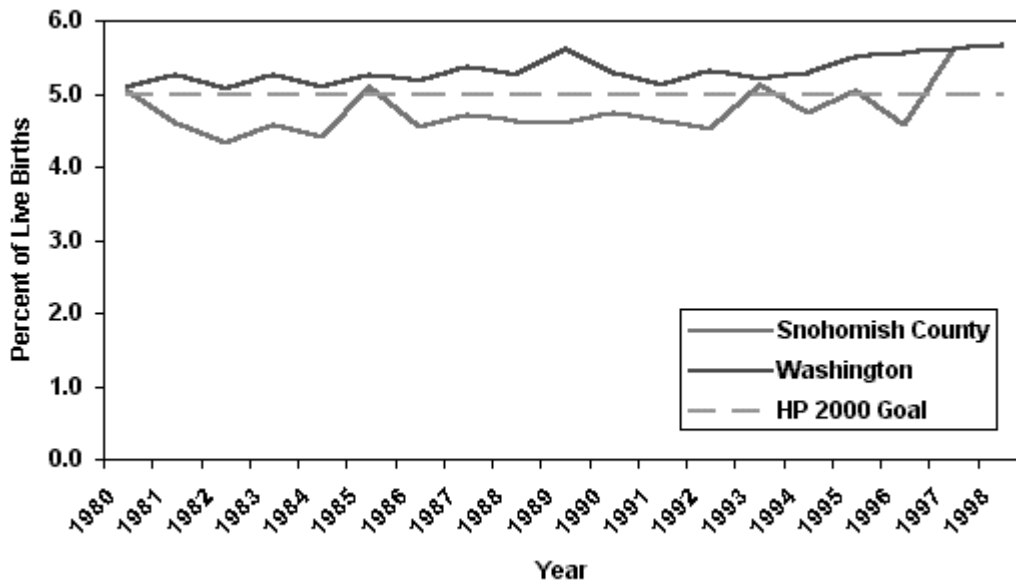
*Rate per 1,000 females 15-17

Data Sources:

Birth Certificate Data: Washington State Department of Health, Center for Health Statistics.
 Population Estimates and Projections: 1990-2002, Department of Social and Health Services, Washington State Adjusted Population Estimates, April 1999. 1980-1989 Population Estimates, Washington State Office of Financial Management.

"Low Birth Weight" Births

Snohomish County & Washington State, 1980-1998



"Low birth weight" is defined as birth-weight of less than 2,500 grams. The *Healthy People 2000* goal is to reduce the incidence of low birth weight to no more than 5% of all live births across the nation.

Year	Snohomish County			Washington			
	Percent %	95% C.I.	LBW Births	All Live Births	Percent %	LBW Births	All Live Births
1980	5.0	(4.5, 5.7)	285	5,670	5.1	3,446	67,595
1981	4.6	(4.1, 5.2)	282	6,136	5.3	3,650	69,589
1982	4.3	(3.8, 4.9)	260	5,985	5.1	3,519	69,415
1983	4.6	(4.1, 5.2)	279	6,096	5.3	3,599	68,607
1984	4.4	(3.9, 5.0)	278	6,284	5.1	3,498	68,695
1985	5.1	(4.6, 5.7)	332	6,511	5.3	3,692	70,073
1986	4.6	(4.1, 5.1)	302	6,630	5.2	3,599	69,320
1987	4.7	(4.2, 5.3)	320	6,788	5.7	3,754	70,070
1988	4.6	(4.1, 5.1)	341	7,381	5.3	3,813	72,485
1989	4.6	(4.1, 5.1)	361	7,856	5.6	4,242	75,367
1990	4.0	(4.3, 5.2)	393	8,274	5.3	4,196	79,328
1991	4.6	(4.2, 5.1)	379	8,212	5.1	4,083	79,803
1992	4.5	(4.1, 5.0)	367	8,121	5.3	4,223	79,604
1993	5.1	(4.7, 5.7)	413	8,055	5.2	4,096	78,637
1994	4.7	(4.3, 5.2)	370	7,828	5.3	4,084	77,249
1995	5.0	(4.5, 5.6)	383	7,612	5.5	4,240	77,065
1996	4.6	(4.1, 5.1)	362	7,908	5.6	4,328	77,713
1997	5.6	(5.1, 6.2)	454	8,097	5.6	4,381	77,961
1998	5.7	(5.2, 6.2)	473	8,324	5.7	4,470	78,946

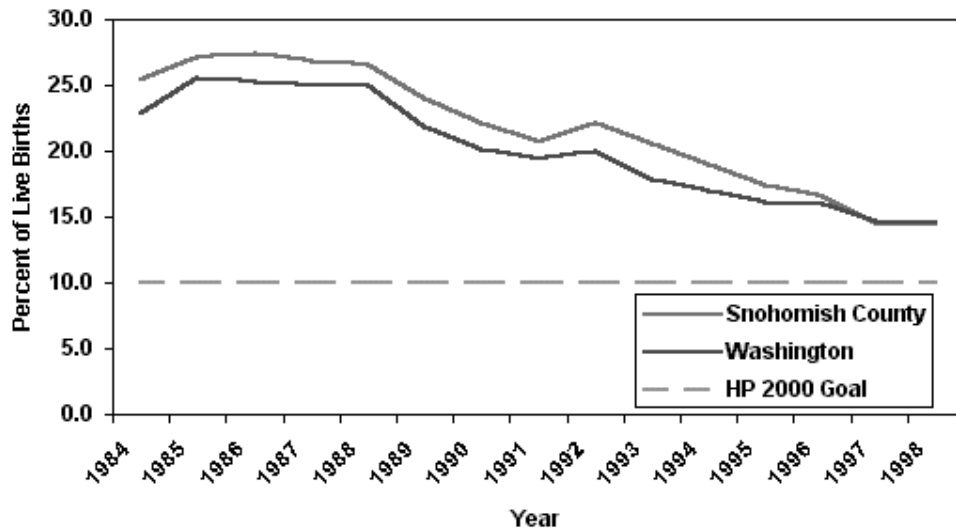
Data Sources:

Birth Certificate Data: Washington State Department of Health, Center for Health Statistics.

1990-2002 Population Estimates and Projections: Department of Social and Health Services, Washington State Adjusted Population Estimates, April 1999.

1980-1989 Population Estimates are based on estimates by the Washington State Office of Financial Management.

Self-reported Maternal Smoking During Pregnancy Snohomish County & Washington State, 1984-1998



Poor pregnancy outcomes due to maternal smoking are well documented. For example, low birth weight and premature birth have been shown to be associated with maternal smoking. Self-reported maternal smoking rates have declined significantly in Snohomish County and Washington state in the past decade. Yet, as of 1998, the national goal of at least 90% abstinence from tobacco by pregnant women has not been met in the county or state.

Snohomish County					Washington		
<u>Year</u>	<u>Percent</u>	<u>95% C.I.</u>	<u>Maternal Smoking</u>	<u>All Live Births*</u>	<u>Percent</u>	<u>Maternal Smoking</u>	<u>All Live Births*</u>
1984	25.4	(24.2, 26.7)	1,589	6,250	22.9	14,674	64,030
1985	27.2	(25.9, 28.5)	1,730	6,359	25.6	16,816	65,683
1986	27.5	(26.2, 28.8)	1,781	6,485	25.3	16,542	65,474
1987	26.8	(25.6, 28.1)	1,785	6,659	25.1	16,618	66,321
1988	26.6	(25.4, 27.8)	1,916	7,208	25.0	17,122	68,594
1989	24.0	(22.9, 25.2)	1,714	7,138	21.8	14,323	65,694
1990	22.1	(21.0, 23.2)	1,666	7,546	20.1	13,752	68,495
1991	20.8	(19.8, 21.8)	1,580	7,610	19.4	13,777	70,988
1992	22.2	(21.2, 23.3)	1,752	7,897	20.0	15,381	76,915
1993	20.6	(19.7, 21.7)	1,635	7,920	17.9	13,813	77,296
1994	19.1	(18.1, 20.1)	1,443	7,566	17.0	12,848	75,638
1995	17.4	(16.4, 18.4)	1,288	7,414	16.1	12,073	75,100
1996	16.6	(15.7, 17.5)	1,266	7,636	16.0	11,951	74,787
1997	14.4	(13.6, 15.3)	1,134	7,865	14.6	10,890	74,760
1998	14.5	(13.7, 15.3)	1,165	8,053	14.6	10,963	75,110

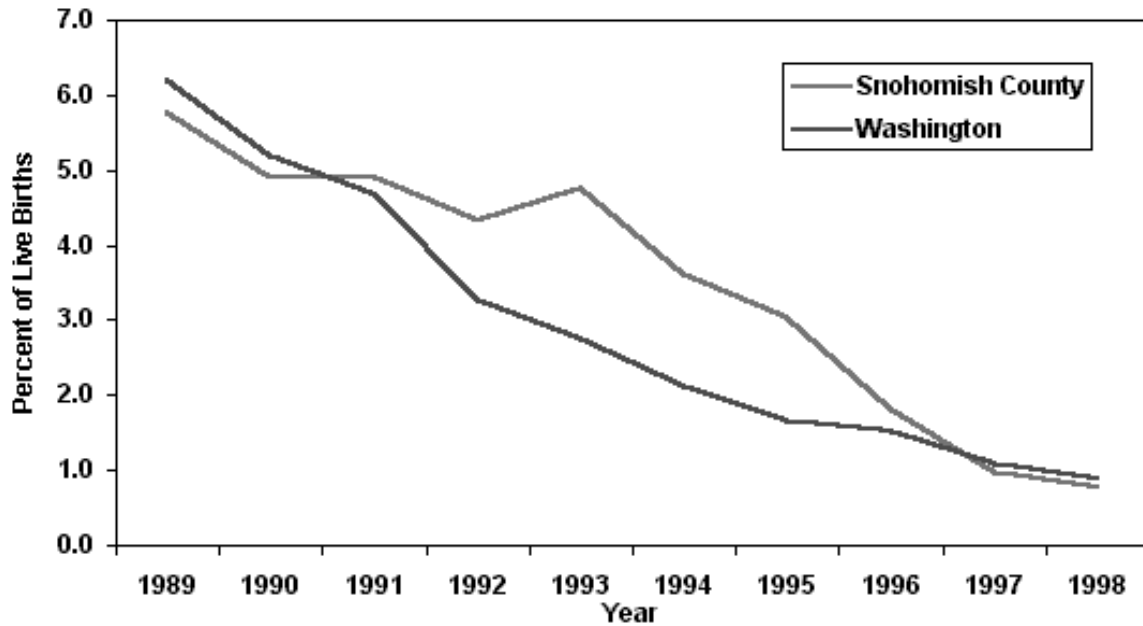
* Live births for which smoking data are available

Data Sources:

Birth Certificate Data: Washington State Department of Health, Center for Health Statistics.

Population Estimates and Projections: 1990-2002, Department of Social and Health Services, Washington State Adjusted Population Estimates, April 1999. 1980-1989 Population Estimates, Washington State Office of Financial Management.

**Self-Reported Maternal Alcohol Use During Pregnancy
Snohomish County & Washington, 1989-1998**



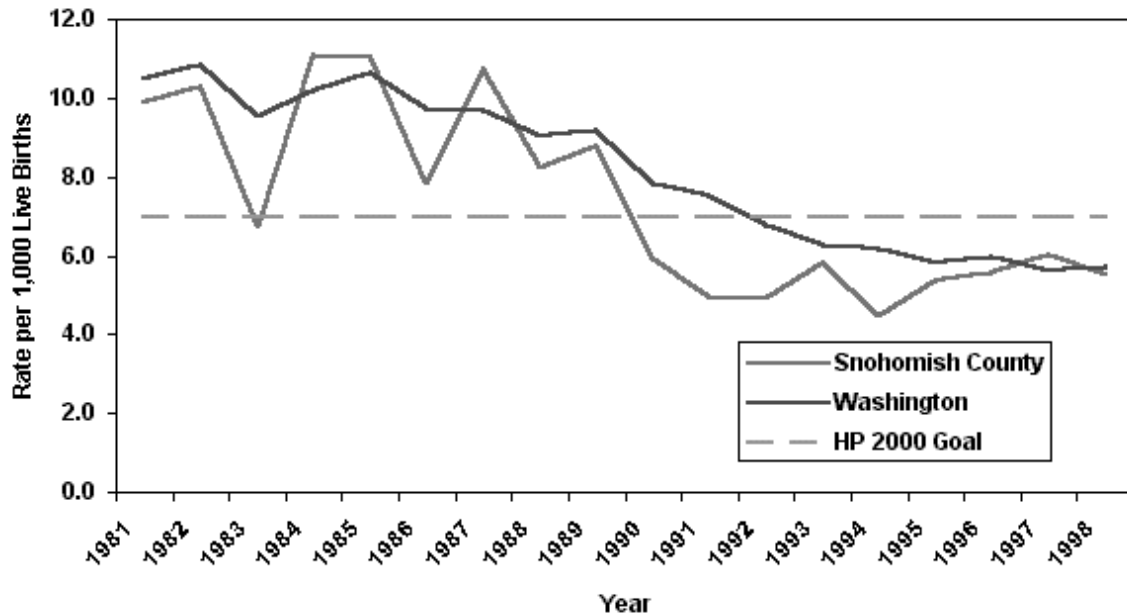
Alcohol Consumption during pregnancy is known to cause alcohol-related defects and fetal alcohol syndrome. Fetal alcohol syndrome is entirely preventable since it is a direct result of maternal alcohol consumption. Self-reported maternal alcohol use has declined in Washington and Snohomish County in the past decade.

Year	<i>Snohomish County</i>			<i>Washington</i>			
	Percent %	95% C.I.	Maternal Alcohol Use	All Live Births	Percent %	Maternal Alcohol Use	All Live Births
1989	5.8	(5.2, 6.4)	406	7,025	6.2	3,856	62,147
1990	4.9	(4.4, 5.5)	368	7,473	5.2	3,397	65,380
1991	4.9	(4.4, 5.4)	372	7,587	4.7	3,186	68,144
1992	4.3	(3.9, 4.8)	340	7,843	3.3	2,503	76,368
1993	4.8	(4.3, 5.3)	363	7,625	2.8	2,017	73,430
1994	3.6	(3.2, 4.1)	267	7,378	2.1	1,548	72,514
1995	3.1	(2.7, 3.5)	225	7,370	1.7	1,165	69,904
1996	1.8	(1.5, 2.1)	135	7,457	1.5	1,026	67,761
1997	1.0	(0.8, 1.2)	75	7,637	1.1	740	67,629
1998	0.8	(0.6, 1.0)	61	7,929	0.9	603	67,279

Data Sources:

Birth Certificate Data: Washington State Department of Health, Center for Health Statistics.
 Population Estimates and Projections: 1990-2002, Department of Social and Health Services, Washington State Adjusted Population Estimates, April, 1999. 1980-1989 Population Estimates, Washington State Office of Financial Management.

**Infant Mortality Rates
Snohomish County & Washington State, 1981-1998**



Infant mortality is defined as death of infants less than one year of age. The rate of infant mortality is one of the most important indicators of the overall health of a community. There has been a decrease in the rate of infant mortality in the past decade in both Snohomish County and Washington State. The goal set forth in *Healthy People 2000* is to reduce the rate of infant mortality to no more than 7 per 1,000 live births nationwide.

Year	Snohomish County				Washington		
	Rate*	95% C.I.	Infant Deaths	All Live Births	Rate*	Infant Deaths	All Live Births
1981	9.9	(7.6, 12.7)	61	6,161	10.5	735	69,987
1982	10.3	(7.9, 13.2)	62	6,014	10.8	755	69,681
1983	6.7	(4.8, 9.1)	41	6,104	9.5	656	68,794
1984	11.1	(8.7, 14.0)	70	6,303	10.2	702	69,059
1985	11.0	(8.6, 13.9)	72	6,527	10.7	749	70,357
1986	7.8	(5.9, 10.3)	52	6,646	9.7	676	69,572
1987	10.7	(8.4, 13.5)	73	6,801	9.7	683	70,409
1988	8.3	(6.3, 10.6)	61	7,390	9.0	656	72,660
1989	8.8	(6.8, 11.1)	69	7,862	9.2	694	75,595
1990	5.9	(4.4, 7.8)	49	8,286	7.8	622	79,468
1991	5.0	(3.6, 6.8)	41	8,224	7.5	603	79,962
1992	4.9	(3.5, 6.7)	40	8,128	6.8	540	79,897
1993	5.8	(4.3, 7.8)	47	8,062	6.3	495	78,771
1994	4.5	(3.1, 6.2)	35	7,833	6.2	478	77,368
1995	5.4	(3.9, 7.3)	41	7,629	5.8	449	77,240
1996	5.6	(4.0, 7.5)	44	7,921	6.0	467	77,874
1997	6.0	(4.5, 8.0)	49	8,110	5.6	440	78,141
1998	5.5	(4.0, 7.4)	46	8,345	5.7	452	79,268

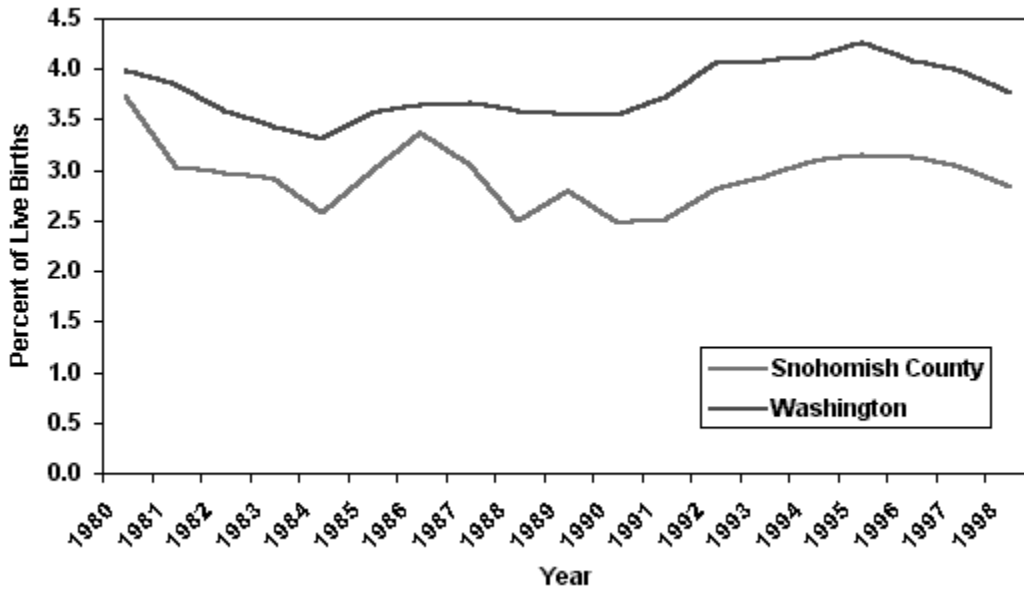
*Rate per 1,000 Live Births

Data Sources:

Linked Birth/Death Certificate Data: Washington State Department of Health, Center for Health Statistics.
Population Estimates and Projections: 1990-2002, Department of Social and Health Services, Washington State Adjusted Population Estimates, April 1999. 1980-1989 Population Estimates, Washington State Office of Financial Management.

Proportion of Mothers Giving Birth Under the Age of 18 Years

Snohomish County & Washington State, 1980-1998



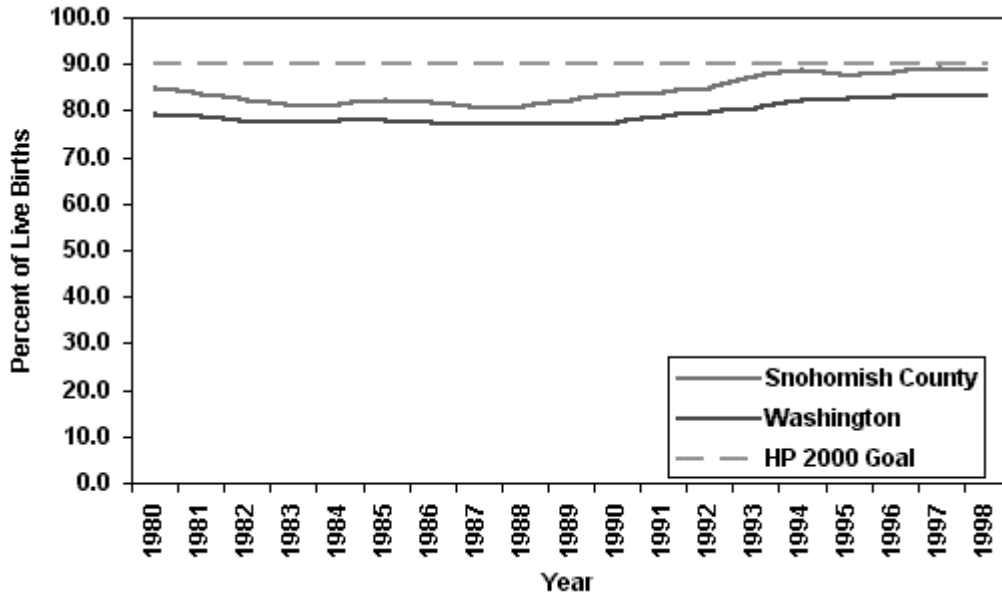
Adolescent mothers are more likely to be unmarried and lack a complete high school education. These factors, and other associated problems, put young mothers at risk for poor birth outcomes. Adolescent mothers may lack the social supports necessary to raise an infant successfully, and the responsibility of raising an infant may interfere with a young mother's ability to pursue her educational goals.

Year	Snohomish County			Washington		
	Percent %	95% C.I.	Maternal Age <18	Percent %	Maternal Age <18	All Live Births
1980	3.7	(3.2, 4.3)	212	4.0	2,713	67,965
1981	3.0	(2.6, 3.5)	187	3.8	2,688	69,971
1982	3.0	(2.6, 3.5)	179	3.6	2,491	69,651
1983	2.9	(2.5, 3.4)	178	3.4	2,353	68,783
1984	2.6	(2.2, 3.0)	162	3.3	2,284	69,042
1985	3.0	(2.6, 3.5)	196	3.6	2,503	70,318
1986	3.4	(3.0, 3.9)	224	3.7	2,536	69,537
1987	3.1	(2.7, 3.5)	208	3.7	2,581	70,355
1988	2.5	(2.1, 2.9)	184	3.6	2,602	72,586
1989	2.8	(2.4, 3.2)	219	3.5	2,673	75,431
1990	2.5	(2.2, 2.8)	205	3.5	2,815	79,417
1991	2.5	(2.2, 2.9)	207	3.7	2,984	79,912
1992	2.8	(2.5, 3.2)	228	4.1	3,249	79,819
1993	2.9	(2.6, 3.3)	237	4.1	3,214	78,721
1994	3.1	(2.7, 3.5)	243	4.1	3,193	77,300
1995	3.2	(2.8, 3.6)	240	4.3	3,293	77,146
1996	3.1	(2.8, 3.6)	249	4.1	3,175	77,843
1997	3.0	(2.7, 3.4)	246	4.0	3,111	78,124
1998	2.8	(2.5, 3.2)	236	3.8	2,977	79,201

Data Sources:

Birth Certificate Data: Washington State Department of Health, Center for Health Statistics.
 1990-2002 Population Estimates and Projections: Department of Social and Health Services, Washington State Adjusted Population Estimates, April 1999.
 1980-1989 Population Estimates are based on estimates by the Washington State Office of Financial Management.

Proportion of Women Receiving First Trimester Prenatal Care Snohomish County & Washington 1980-1998



Year 2000 Goal: Increase to at least 90% the proportion of all pregnant women who receive prenatal care in the first trimester of pregnancy. Early, high quality prenatal care is critical to improving birth outcomes.

Year	Snohomish County				Washington		
	Percent	95% C.I.	Early Prenatal Care	Live Births	Percent	Early Prenatal Care*	Live Births
1980	85.0	(82.6, 87.5)	4,752	5,589	79.5	52,637	66,222
1981	83.6	(81.3, 85.9)	5,075	6,070	79.1	54,292	68,659
1982	82.2	(79.9, 84.5)	4,890	5,952	77.7	53,470	68,830
1983	81.0	(78.8, 83.3)	4,898	6,046	77.7	52,717	67,855
1984	81.5	(79.3, 83.8)	5,067	6,219	78.2	52,632	67,285
1985	82.2	(80.0, 84.4)	5,248	6,387	77.9	53,168	68,281
1986	81.8	(79.6, 84.1)	5,286	6,461	77.5	52,247	67,431
1987	80.8	(78.6, 82.9)	5,344	6,618	77.2	52,305	67,776
1988	80.9	(78.8, 83.0)	5,794	7,163	77.1	53,975	70,005
1989	82.2	(80.1, 84.3)	6,200	7,545	77.0	55,146	71,636
1990	83.5	(81.5, 85.5)	6,683	8,002	77.6	53,814	75,777
1991	84.0	(82.0, 86.0)	6,585	7,841	79.0	60,049	76,031
1992	84.8	(82.7, 86.8)	6,563	7,744	79.9	60,478	75,737
1993	87.4	(85.3, 89.5)	6,741	7,714	80.8	60,594	75,040
1994	88.7	(86.6, 90.9)	6,553	7,389	82.5	60,423	73,206
1995	87.4	(85.2, 89.5)	6,304	7,217	82.7	59,058	71,452
1996	88.2	(86.0, 90.3)	6,476	7,460	83.3	59,867	71,871
1997	89.1	(86.9, 91.2)	6,739	7,567	83.4	59,140	70,908
1998	89.0	(86.9, 91.1)	6,920	7,776	83.0	59,353	71,488

* Received first trimester prenatal care

Data Sources:

Birth Certificate Data: Washington State Department of Health, Center for Health Statistics.

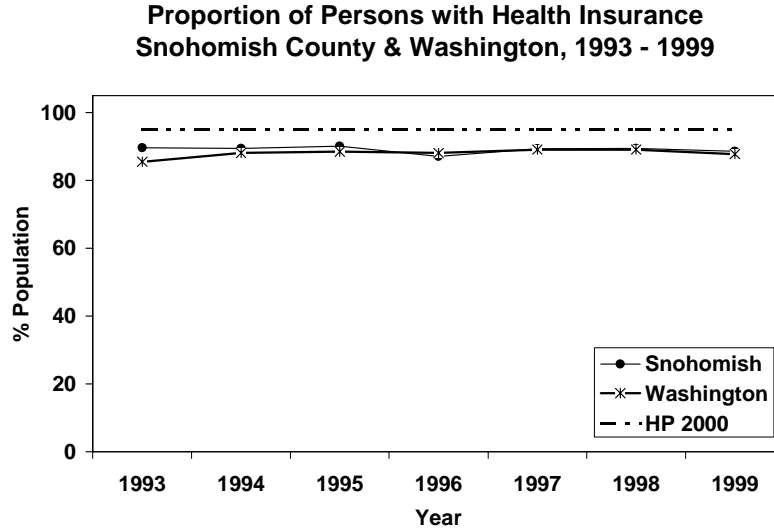
Population Estimates and Projections: 1990-2002, Department of Social and Health Services, Washington State Adjusted Population Estimates, April 1999. 1980 -1989 Population Estimates, Washington State Office of Financial Management.

A Comparison of Recent Snohomish County, Washington State, and National Consensus Indicators with Year 2000 and Year 2010 Goals

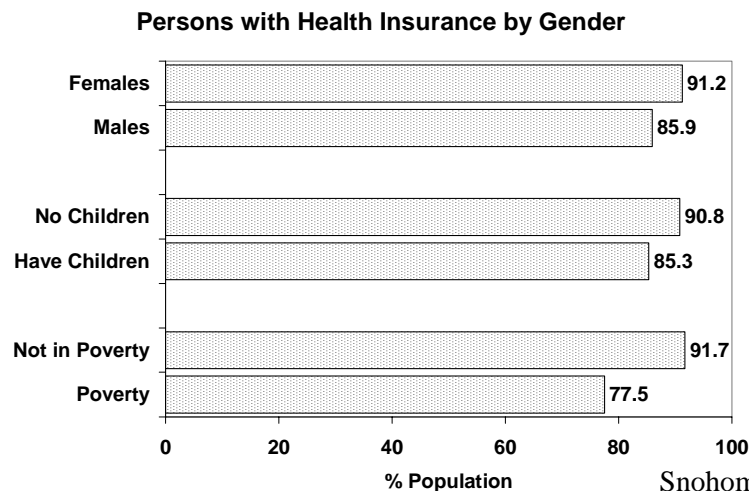
Health Status Indicators	Snohomish County	WA State	United States	US Year 2000 Goal	US Year 2010 Goal
Maternal, Infant & Child Health Indicators	1998	1998	1996		
School-age Mothers (% births to teens 10-17)	2.8%	3.8%	5.1%	--	--
Teen Pregnancy Rate (per 1000 females ages 15-17)	41.1	45.5	64.3	50	50
Infant Mortality Rate (deaths per 1000 live births)	5.5	5.7	7.3	7.0	5.0
Percent Low Birth Weight (<2500 grams)	5.7%	5.7%	7.4%	5.0%	5.0%
Percent of Mothers with No First Trimester Prenatal Care	11.0%	17.0%	18.1%	10.0%	10.0%
Percent of Children Between the Ages of 5 and 17 Living in Poverty	8.9% (1995)	12.8% (1995)	18.7% (1995)	--	--
Mortality Indicators (Age-Adjusted Deaths per 100,000 Population)	1998	1998	1996		
Total Deaths	417.0	424.1	496.1	--	--
Coronary Heart Disease (ischemic only)	76.6	75.9	86.7	100.0	51.0
Stroke (cerebrovascular disease)	26.4	25.7	26.4	20.0	16.0
Female Breast Cancer	22.2	17.6	20.2	20.6	16.6
Lung Cancer	34.2	36.4	39.3	42.0	33.0
Suicide	10.9	11.4	10.8	10.5	9.6
Homicide	2.6	4.5	8.5	7.2	7.2
Motor Vehicle Deaths	10.5	13.3	16.2	16.8	11.2
Infectious Disease Indicators (cases per 100,000 population)	1998	1998	1998		
AIDS (Age-Adjusted Cases per 100,000 population)	4.4	7.8	17.6	--	--
Tuberculosis	3.5	4.7	6.8	3.5	1.0

Access to Health Care

The proportion of Snohomish County residents with some form of health insurance remained consistent with previous years at 88.6%. This is comparable to the rest of Washington State (88.1%). Among persons 18 to 64, 86.8% of Snohomish County residents had health insurance, compared to 85.9% for all of Washington State. Both Snohomish County and the State are short of the Healthy People 2000 goal of 95% coverage.



Women were more likely to have health insurance than men, 91.2% vs 85.9%. This difference was statistically significant ($p = .05$). If persons 65 and over are removed from the analysis (because said persons all have insurance in the form of Medicare), the proportions do not change significantly, with 89.6% of women having coverage compared to 84% of men. Respondents with children were less likely to have insurance than those without (85.3% vs. 90.8%, $p = .044$), although this difference goes away if people 65 and over are excluded from the analysis. Persons with incomes below 200% of the Federal poverty guidelines were much less likely to have insurance than others (77.5% vs. 91.7%, $p = .0001$). This difference increases if persons 65 and over are excluded (74.1% vs 90.6%, $p < .0001$).



Snohomish County Youth Substance Abuse Trends¹ 30 Day Use

(Percentage of students having tried the substance at least once during the past 30 days)

	Alcohol	Smoking Tobacco	Chewing Tobacco	Marijuana
6 th Grade 1998: County State	No data No data	4.63 4.70	2.86 3.53	3.36 3.45
6 th Grade 2000: County State	6.48 6.64	3.24 4.05	0.64 0.78	1.73 1.51
8 th Grade 1998: County State	No data No data	14.85 15.22	5.56 6.66	16.67 16.46
8 th Grade 2000: County State	19.02 22.31	11.56 12.50	1.54 2.06	10.58 12.04
10 th Grade 1998: County State	No data No data	25.76 21.83	10.07 9.62	27.94 26.61
10 th Grade 2000: County State	36.12 37.58	20.43 19.79	4.60 7.22	21.31 21.88
12 th Grade 1998: County State	No data No data	33.33 28.61	16.07 12.42	29.82 28.72
12 th Grade 2000: County State	49.05 46.78	27.09 27.65	7.22 8.77	26.59 24.44

Several things need to be understood when looking at this survey data:

- ◆ First, the Washington State Survey of Adolescent Health Behaviors is a biennial survey of 6th, 8th, 10th, and 12th grade students.
- ◆ A statewide sample is selected which included some Snohomish County schools. Schools that were not selected for the statewide sample are given the opportunity to participate in a piggyback survey. This is the same survey given to the statewide sample. In the past 1988-1998 there has been a charge for participating in the piggyback survey. In 2000, the state removed the charge for participation, which led to a considerable increase in the number of participants.
- ◆ The question for **30-day use of alcohol** changed so much from 1998 to 2000 that they are not comparable. In 1998 the question was phrased “how many times have you used alcohol

¹ Washington State Survey of Adolescent Health Behaviors – Results of the Fall 2000 Administration (County and State Profiles, Office of Superintendent of Public Instruction (OSPI). In 1998, 9,166 students participated in this survey and in 2000, 19,860 students participated.

(beer, wine, wine coolers, hard liquor)?” In 2000 the question was “On how many days did you drink a glass, can or bottle of alcohol (beer, wine, wine coolers, hard liquor)?” Initial evidence suggests that the difference in wording has had a significant impact on student responses.

- ◆ The 1998 survey was administered in the Spring, the 2000 survey in the Fall. Most researchers suspect that there are seasonal effects in student surveys, but there is no research that clarifies this effect.
- ◆ The drugs included on the above table (alcohol, smoking tobacco, chewing tobacco and marijuana) were selected because they are the measures selected by the Washington State Division of Alcohol and Substance Abuse (DASA) and are considered gateway drugs for further substance abuse.

Of important content note is the fact that in every instance above, County percentages dropped between 1998 and 2000. This follows a state and national trend in substance and in the first such broad-based reduction since 1992.

Health Section Data Sources:

Center for Health Statistics, Department of Health, WA 1997

Health, United States, 1998, National Academy of Sciences, Washington D.C., 1999.

Healthy People 2010 Objectives

Monthly Vital Statistics Report, Vol 45, No. 12(s), CDC/NCHS

Healthy People 2000 Review, USDHHS, PHS, 1994

Office of Epidemiology, Communicable Disease Epidemiology, DOH, WA 1997

Office of HIV/AIDS Epidemiology, DOH, WA 1997

U.S. Bureau of Census, 1997

CDC “Consensus set of health status indicators for the general assessment of community health status, U.S.” MMWR 40 (27): 449-51, 1991. Kelso, S, (Ed)

Public Health Improvement Plan, Washington State Department of Health, November 29, 1994

“Trends in Pregnancies & Pregnancy Rates: Estimates for US, 1980-1992”, Monthly Vital Statistics Report, Vol. 43, no. 11 (s), May 25, 1995. CDC, NCHS.

Section V

Leisure Activities

Disclaimer: This is not a completely comprehensive list of parks and leisure activities available in Snohomish County. While great effort has been made to insure the accuracy, the publisher will not be held liable for errors or omissions.

Parks:

Over the last 20 years the role of parks in Snohomish County has changed. From the 1960's to the mid 1990's the focus was on large regional resource land preservation. Today the focus begins to shift towards small local land preservation as resources continue to diminish. According to the 2001 Snohomish County Comprehensive Park and Recreation Plan, participants were asked to indicate where they felt Snohomish County Parks should focus its resources over the next six years. This resulted in 24.7% of respondents favoring trails followed by 21.6% favoring natural resources, 17.7% favoring water activities, 16.1% sports facilities, 14.8% leisure, and 5.1% favoring special use facilities.

According to the County Comprehensive Plan, despite growth and the desire for more community parks, the demand for regional park facilities has, if anything intensified. There are a wide variety of recreational interests represented in the County, as citizens and local recreation providers want to be sure land is available for community leisure parks convenient to population centers. There is significant interest in trails and a strong constituency for certain special use facilities such as BMX tracks, skateboard parks and ORV areas. Recent listing of Chinook Salmon and Bull Trout raised awareness of the need to protect stream corridors and habitat networks, instilling a strong desire to set aside wetlands and forested areas for wildlife habitat and open space.

Input from a variety of sources demonstrate that the earlier demand for regional athletic facilities has given way to a greater focus on multi-purpose parks at the community level. This mix of active and passive uses reflects a greater emphasis on general leisure facilities. In the County Comprehensive Plan, citizens emphasized the desire for parks that accommodate a greater cross-section of the population. This was true in both urban and rural areas. In urban areas, the need for more parks was apparent; growing population has placed considerable pressure on existing resources, whether the County, cities, or school districts provide them. In rural areas, the local jurisdiction may not have the financial resources to develop a community level park without significant partnering efforts by the County.

In the tables below you will find names and locations of parks located within Snohomish County as compared to the suggested national standards. The park acres include city owned parks and open space, with the exception of golf courses, which are listed later in the report. Best efforts were made to insure accuracy, as some parks names may have been inadvertently omitted. *According to the National Park Land Standards, the National Recreation and Park Association suggests that a park system, at a minimum, be composed of a total of 6.25 to 10.50 acres of developed open space per 1,000 population.*

City of Mukilteo Parks

	<u>2000 Population</u>	<u>2000 Park Acres</u>	<u>Acres/1000 Population</u>	<u>National Standards</u>
Total	18,019	370	20.5	10

- 92nd Street Park
- Elliot Point Park
- Pain Field Recreational Center
- U.S. Coast Guard Light House

City of Everett Parks

	<u>2000 Population</u>	<u>2000 Park Acres</u>	<u>Acres/1000 Population</u>	<u>National Standards</u>
Total	91,488	1,240	13.6	10

- American Legion Park
- Forest Park
- Howarth Park
- Kasch Park
- Langus Riverfront Park
- Rotary Park
- Thorton A. Sullivan Park
- Walter E. Hall Park

City of Mill Creek Parks

	<u>2000 Population</u>	<u>2000 Park Acres</u>	<u>Acres/1000 Population</u>	<u>National Standards</u>
Total	11,525	41	3.6	10

- Heron Park
- Highland Park
- Library Park
- Pine Meadow Park
- Nickel Creek Park
- Cougar Park
- Vineyard Park

City of Monroe Parks

	<u>2000 Population</u>	<u>2000 Park Acres</u>	<u>Acres/1000 Population</u>	<u>National Standards</u>
Total	13,795	246	17.8	10

- Al Borlin Park
- Skykomish River City Park
- Blueberry City Park
- Currie View Neighborhood Park
- Freemont Neighborhood Park
- Travelers Park
- Lewis Street Park
- Fryelands Neighborhood Park
- Maltby Community Park
- Farigrounds Education Wetlands
- Lake Tye Park
- Stanton Meadows Park
- Cedar Grove
- West Monroe Community Park

City of Snohomish Parks

	<u>2000 Population</u>	<u>2000 Park Acres</u>	<u>Acres/1000 Population</u>	<u>National Standards</u>
Total	8,494	91.3	10.7	10

- Blackman Lake Hill Park
- Hal Moe Pool Park
- Cady Park and boat launch
- Fischer Park
- Hill Park
- Ferguson Park
- Gazebo
- Averill Field
- Kla Ha Ya Park
- Claytown Park
- Morgantown
- Pilchuck Recreation Area

City of Sultan Parks

	<u>2000 Population</u>	<u>2000 Park Acres</u>	<u>Acres/1000 Population</u>	<u>National Standards</u>
Total	3,344	111	33.2	10

- Reese Park
- River Park
- Sportsman Park
- Cemetery Park
- Osprey Park
- Ro Side Park

City of Index Parks

	<u>2000 Population</u>	<u>2000 Park Acres</u>	<u>Acres/1000 Population</u>	<u>National Standards</u>
Total	157	0.5	3.2	10

- Doolittle Park

City of Arlington Parks *(excludes open space)*

	<u>2000 Population</u>	<u>2000 Park Acres</u>	<u>Acres/1000 Population</u>	<u>National Standards</u>
Total	11,713	33.5	2.9	10

- Glen Eagle IVE
- Jensen Park
- Wedgewood Park
- Terrace Park
- Bill Quake Park
- W.E. Evans Park
- Haller Park
- Jordan Bridge Park

City of Granite Falls Parks

	<u>2000 Population</u>	<u>2000 Park Acres</u>	<u>Acres/1000 Population</u>	<u>National Standards</u>
Total	2,347	20	8.5	10

- Galena Park
- Jim Holm Park
- Perrigou Field
- Jack Webb Park
- Frank Mason Park

City of Lake Stevens Parks

	<u>2000 Population</u>	<u>2000 Park Acres</u>	<u>Acres/1000 Population</u>	<u>National Standards</u>
Total	6,361	46.8	7.4	10

- Catherine Creek Park & Gardens
- North Cove Park and Boardwalk
- North Lakeshore Swimming Beach
- City boat launch
- Centennial Woods Park
- Eagle Ridge Park
- Lake Pointe
- Timberlake Court Park

City of Marysville Parks

	<u>2000 Population</u>	<u>2000 Park Acres</u>	<u>Acres/1000 Population</u>	<u>National Standards</u>
Total	25,315	353.3	14.0	10

- Comeford Park
- Foothills Park
- Jennings Memorial & Nature Park
- Northpointe Park
- Youth Peace Park
- Hickok Park
- Cedarcrest Reservoir
- Serenity Park
- Dearing Wildflower Estate
- Harborview Park
- Verda Ridge Park
- Tuscany Ridge
- Cedarcrest Vista

City of Stanwood Parks

	<u>2000 Population</u>	<u>2000 Park Acres</u>	<u>Acres/1000 Population</u>	<u>National Standards</u>
Total	3,923	58.8	15.0	10

- Church Creek Park
- Heritage Park
- Lions Park
- Triangle Park

City of Darrington Parks

	<u>2000 Population</u>	<u>2000 Park Acres</u>	<u>Acres/1000 Population</u>	<u>National Standards</u>
Total	1,136	6	5.3	10

- Old School Park
- Dot City Park
- Nells Bruces Park

City of Brier Parks

	<u>2000 Population</u>	<u>2000 Park Acres</u>	<u>Acres/1000 Population</u>	<u>National Standards</u>
Total	6,383	78.4	12.3	10

- Brier Park
- Brierwood Park
- Locust Creek Park
- City Light Woods

City of Edmonds Parks

	<u>2000 Population</u>	<u>2000 Park Acres</u>	<u>Acres/1000 Population</u>	<u>National Standards</u>
Total	39,515	258	6.5	10

- Edmonds City Park
- Civic Center Playfield
- Edmonds Fishing Pier & Olympic Beach
- Underwater Park
- Meadowdale Playfields
- Frances Anderson Center
- Bracketts Landing
- Marina Beach Park
- Sierra Park
- Yost Memorial Park

City of Lynnwood Parks

	<u>2000 Population</u>	<u>2000 Park Acres</u>	<u>Acres/1000 Population</u>	<u>National Standards</u>
Total	33,847	343	10.1	10

- Lynnwood Neighborhood Park
- Maple Park
- Meadowdale Playfields
- Mini Park
- Wilcox Park
- Pioneer Park
- Scriber Creek Park
- South Lynnwood Neighborhood Park
- Spruce Park
- Lynndale Park

City of Mountlake Terrace Parks

	<u>2000 Population</u>	<u>2000 Park Acres</u>	<u>Acres/1000 Population</u>	<u>National Standards</u>
Total	20,362	159	7.8	10

- Ballinger Park
- Matt Hirvela Bicentennial Park
- Evergreen Playfield
- Civic Center
- Forest Creek Playfield
- Veterans Memorial Park
- Lower Terrace Park
- Jack Long Park
- Fire Fighters Memorial Park
- Recreation Pavilion
- Terrace Creek Park
- Terrace Ridge Park
- Upper Terrace Park

Unincorporated Snohomish County Parks

	<u>2000 Population</u>	<u>2000 Park Acres</u>	<u>Acres/1000 Population</u>	<u>National Standards</u>
Total	285,385	9,000	31.5	10

- McCollum Pioneer Park
- North Creek Park
- Spencer Island Park
- Mukilteo State Park
- Heirman Wildlife Park at Thomas' Eddy
- Lord Hill Regional Park
- Lowing Lake
- Lake Roesiger
- Wallace Falls State Park
- Wenberg State Park
- Picnic Point Park
- Camano Island State Park
- Mount Pilchuck State Park
- Esperance Park
- Martha Lake
- Meadowdale Park
- Olympic View Park
- Kayak Point
- Lundeen Park
- Gissberg Twin Lakes Park
- Wyatt Park
- Portage Creek Park
- Rive Meadows
- Riverscene Park
- Robe Canyon Historic Park
- Squire Creek
- Sunset Park
- Twin Rivers Park

Leisure Activities:

Arts & Performing Arts

North County: (*Arlington, Granite Falls, Lake Stevens, Marysville, Stanwood, Darrington*)

- Camwood Players Community Theatre: Located in the city of Stanwood

Central County: (*Mukilteo, Everett, Mill Creek*)

- Arts Council of Snohomish County: Located in the city of Everett
- Everett Theatre Players: Located in the city of Everett
- Everett Performing Arts Center: Located in the city of Everett
- Village Theatre: Located in the city of Everett
- Pied Piper Presents: Located in the city of Everett
- Everett Symphony: Located in the city of Everett

East County: (*Monroe, Snohomish, Sultan, Index*)

- Off the Wall Community Theatre: Located in the city of Monroe
- Take a Bough Productions: Located in the city of Monroe
- Parallax Gallery: Located in the city of Startup.

South County: (*Brier, Edmonds, Lynnwood, Mountlake Terrace*)

- Edmonds Arts Festival Museum: Located in the city of Edmonds
- Gallery North: Located in city of Edmonds
- Edmonds Arts Commission: Located in the city of Edmonds
- Cascade Symphony: Located in the city of Edmonds
- Driftwood Players at the Wade James Theatre: Located in the city of Edmonds
- Olympic Ballet Theatre & School: Located in the city of Edmonds
- Edge of the World Theatre: Located in the city of Edmonds
- Lynnwood Arts Commission: Located in the city of Lynnwood
- Mountlake Terrace Library Gallery: Located in the city of Mountlake Terrace

Berry Picking/Corn Mazes/Pumpkin Patch

North County: (*Arlington, Granite Falls, Lake Stevens, Marysville, Stanwood, Darrington*)

- Biringer Farm: Located in the city Marysville
- Due's Berry Farm: Located in the city of Marysville
- Blueberry Patch and Lake Cassidy Nursery: Located in North Snohomish County
- Foster Farms: Located in the city of Arlington

East County: (*Monroe, Snohomish, Sultan, Index*)

- Blue Heron Blueberries: Located in the city of Snohomish
- The Farm: Located in the city of Snohomish
- Mountain View Berry Farm: Located in the city of Snohomish
- Stocker Farm: Located in the city of Snohomish
- Bailey Vegetables: Located in the city of Snohomish
- Craven Farm: Located in the city of Snohomish
- Bob's Corn and Pumpkin Patch: Located in the city of Snohomish
- Baylor Farm: Located in the city of Monroe
- The Blueberry Farm: Located in the city of Monroe
- Bolles Organic Farm: Located in the city of Monroe

Bowling

North County: (*Arlington, Granite Falls, Lake Stevens, Marysville, Stanwood, Darrington*)

- Strawberry Lanes: Located in the city of Marysville
- Melody Lanes: Located in the city of Arlington
- Twin City Lanes: Located in the city of Stanwood

Central County: (*Mukilteo, Everett, Mill Creek*)

- Tyee Lanes: Located in the city of Everett
- Evergreen Lanes: Located in the city of Everett
- Glacier Bowling Lanes: Located in the city of Everett

South County: (*Brier, Edmonds, Lynnwood, Mountlake Terrace*)

- Brunswick Majestic Lanes: Located in the city of Lynnwood
- Lynnwood Bowling Lanes: Located in the city of Lynnwood
- Robin Hood Lanes: Located in the city of Edmonds

Clubs

- Boys and Girls Clubs:
 - ❖ Everett, Mukilteo, Monroe, Sultan, Arlington, Granite Falls, Tulalip, Alderwood and Edmonds.
- YMCA:
 - ❖ Everett, Mukilteo, Southeast Everett, Monroe, and Marysville

Family Resource Centers

North County: (*Arlington, Granite Falls, Lake Stevens, Marysville, Stanwood, Darrington*)

- **Stanwood/Camano Family Resource Center:** Located in the city of Stanwood
- **Lake Stevens Family Center:** Located in the city of Lake Stevens
- **Darrington Family Support and Resource Center:** Located in the city of Darrington

East County: (*Monroe, Snohomish, Sultan, Index*)

- **Sky Valley Community Resource Center/VOA:** Located in the city of Sultan

Central County: (*Mukilteo, Everett, Mill Creek*)

- **South Everett Neighborhood Center:** Located in the city of Everett
- **Familias Unidas, A Hispanic Resource Center:** Located in the city of Everett
- **South Everett Youth and Community Center:** Located in the city of Everett

South County: (*Brier, Edmonds, Lynnwood, Mountlake Terrace*)

- **Family Support Center of South Snohomish County:** Located in the city of Lynnwood

Farmers Markets

North County: (*Arlington, Granite Falls, Lake Stevens, Marysville, Stanwood, Darrington*)

- **Village Farmers Market Faire:** Located in the city of Stanwood

Central County: (*Mukilteo, Everett, Mill Creek*)

- **Everett Farmers Market:** Located in the city of Everett
- **Snohomish Farmers Market:** Located in the city of Everett

South County: (*Brier, Edmonds, Lynnwood, Mountlake Terrace*)

- **Pavilion Saturday Market:** Located in the city of Mountlake Terrace
- **Edmonds Museum Market:** Located in the city of Edmonds

Golfing

North County: (*Arlington, Granite Falls, Lake Stevens, Marysville, Stanwood, Darrington*)

- Battle Creek Public Golf Course: Located in the city of Marysville
- Cedarcrest Golf Course: Located in the city of Marysville
- Gleneagle Golf Course: Located in the city of Arlington
- Kayak Point Golf Course: Located in the city of Stanwood

East County: (*Monroe, Snohomish, Sultan, Index*)

- Blue Boy West Golf Course: Located in the city of Monroe
- Monroe Golf Course: Located in the city of Monore
- Echo Falls Country Club: Located in the city of Snohomish
- Flowing Lake Golf Course: Located in the city of Snohomish
- Kenwanda Golf Course: Located in the city of Snohomish
- Lobo Country Club: Located in the city of Snohomish
- Snohomish Public Golf Course: Located in the city of Snohomish

Central County: (*Mukilteo, Everett, Mill Creek*)

- Harbour Pointe Golf Course: Located in the city of Mukilteo
- Legion Memorial Golf Course: Located in the city of Everett
- Walter E Hall Memorial Golf Course: Located in the city of Everett

South County: (*Brier, Edmonds, Lynnwood, Mountlake Terrace*)

- Nile Temple Golf Club: Located in the city of Mountlake Terrace
- Ballinger Park Municipal Golf Course: Located in the city of Mountlake Terrace
- Lynnwood Municipal Golf Course: Located in the city of Lynnwood

Libraries

North County: (*Arlington, Granite Falls, Lake Stevens, Marysville, Stanwood, Darrington*)

- City of Arlington Library
- City of Darrington Library
- City of Granite Falls Library
- City of Marysville
- City of Stanwood
- City of Lake Stevens

East County: (*Monroe, Snohomish, Sultan, Index*)

- City of Monroe Library
- City of Snohomish Library
- City of Sultan Library

Central County: (*Mukilteo, Everett, Mill Creek*)

- City of Everett Libraries:
 - ❖ Main Branch on Hoyt and Evergreen Branch on Evergreen Way
- Sno-Isle Libraries:
 - ❖ Mill Creek and Mukilteo

South County: (*Brier, Edmonds, Lynnwood, Mountlake Terrace*)

- City of Brier
- City of Edmonds
- City of Lynnwood
- City of Mountlake Terrace

Museums

North County: (*Arlington, Granite Falls, Lake Stevens, Marysville, Stanwood, Darrington*)

- Air Station Museum: Located in the city of Arlington
- Stillaguamish Valley Pioneer Museum: Located in the city of Arlington
- Gehl House: Located in the city of Marysville
- Granite Falls Historical Museum: Located in the city of Granite Falls
- Verlot Public Service Center: Located in the city of Granite Falls
- Pearson House Museum: Located in the city of Stanwood
- Lake Stevens Museum: Located in the city of Lake Stevens

East County: (*Monroe, Snohomish, Sultan, Index*)

- Monroe Historical Museum: Located in the city of Monroe
- Old Snohomish Village: Located in the city of Snohomish
- Blackman's House Museum: Located in the city of Snohomish
- Gold Bar Museum & Historical Society: Located in the city of Gold Bar
- Pickett Index Museum: Located in the city of Index
- Sultan Historical Museum: Located in the city of Sultan

Central County: (*Mukilteo, Everett, Mill Creek*)

- Everett Firefighters Exhibits: Located in the city of Everett
- Snohomish County Museum: Located in the city of Everett
- Children's Museum: Located in the city of Everett
- Mukilteo Lighthouse: Located in the city of Mukilteo
- Mukilteo Museum: Located in the city of Mukilteo

South County: (*Brier, Edmonds, Lynnwood, Mountlake Terrace*)

- Edmonds-Snohomish County Historical Society Museum: Located in the city of Edmonds

Outdoor Attractions/Activities

- Skateboard Park:
 - ❖ Located in the city of Everett on Casino road
 - ❖ Heritage Park in Stanwood
 - ❖ The city of Snohomish, Marysville and Monroe each are potential future sites
 - ❖ Lynndale Park in Lynnwood
- Petting Zoo: Located in the city of Everett at Forest Park Animal Farm
- Jetty Island: A 2-mile long island located just off the Everett waterfront
- Trails
 - ❖ Interurban Trail: Runs through Snohomish County
 - ❖ Langus Riverfront Nature Trail: Runs across the Snohomish River from north Everett
 - ❖ Lowell Riverfront Trail: Runs along side of the Snohomish River
 - ❖ Centennial Trail: 7 mile trail which runs between Snohomish and Lake Stevens
 - ❖ Tulalip Tribes' Interpretive Trail: Runs along the shores of Tulalip Bay
 - ❖ River Crest Trail: Arlington
 - ❖ Union Oil Marsh Wild Life Sanctuary Trail: Edmonds
 - ❖ Mesika Trail: Lynnwood
 - ❖ Scriber Creek Trail: Lynnwood
- Rock Climbing:
 - ❖ Index Town Wall located in the community of Index
 - ❖ Exfoliation Dome outside of Darrington.
- Hot Air Balloon Rides: Located in the city of Snohomish
- Sky Diving: Located in the city of Snohomish
- Snowmobiling:
 - ❖ Just off Highway 2 near Sultan and Index
 - ❖ Trails outside of Darrington
- Big Four Ice Caves: Located in Granite Falls
- Monte Cristo: Located in Granite Falls
- Mount Pilchuck: Located in Granite Falls

Roller Skating

North County: (*Arlington, Granite Falls, Lake Stevens, Marysville, Stanwood, Darrington*)

- Skate in Marysville: Located in the city of Marysville

Central County: (*Mukilteo, Everett, Mill Creek*)

- Skate Deck Everett: Located in the city of Everett

South County: (*Brier, Edmonds, Lynnwood, Mountlake Terrace*)

- Lynnwood Roller Skating Rink: Located in the city of Lynnwood
- Lynnwood's Sno-King Ice Arena: Located in the city of Lynnwood

Swimming Pools

North County: (*Arlington, Granite Falls, Lake Stevens, Marysville, Stanwood, Darrington*)

- **Lake Stevens School:** Located in the city of Lake Stevens
- **Marysville School District Pool:** Located in the city of Marysville
- **YMCA:** Located in the city of Marysville

East County: (*Monroe, Snohomish, Sultan, Index*)

- **YMCA:** Located in the city of Monroe
- **Hal Moe Pool:** Located in the city of Snohomish

Central County: (*Mukilteo, Everett, Mill Creek*)

- **McCullum Park Pool:** Located in the city of Everett
- **Forest Park Swim Center:** Located in the city of Everett
- **YMCA:** Located in the city of Everett

South County: (*Brier, Edmonds, Lynnwood, Mountlake Terrace*)

- **Lynnwood City Parks & Recreation Department Swimming Pool:** Located in the city of Lynnwood
- **Mountlake Terrace Recreation:** Located in the city of Mountlake Terrace
- **Yost Park Pool:** Located in the city of Edmonds

Theatres

North County: (*Arlington, Granite Falls, Lake Stevens, Marysville, Stanwood, Darrington*)

- **Olympic Theatre:** Located in city of Arlington
- **Regal Cinemas Marysville 14:** Located in the city of Marysville

East County: (*Monroe, Snohomish, Sultan, Index*)

- **Galaxy 12:** Located in the city of Monroe

Central County: (*Mukilteo, Everett, Mill Creek*)

- **Everett Cosmopolitan Theater:** Located in the city of Everett
- **Historic Everett Theatre:** Located in the city of Everett
- **Everett Mall Cinema 1-10:** Located in the city of Everett
- **Everett 9 Cinemas:** Located in the city of Everett
- **Puget Park Drive-in:** Located in the city of Everett

South County: (*Brier, Edmonds, Lynnwood, Mountlake Terrace*)

- Alderwood Cinemas: Located in the city of Lynnwood
- Grand Cinemas Alderwood: Located in the city of Lynnwood
- Alderwood Village Cinema: Located in the city of Lynnwood
- Edmonds Theatre: Located in the city of Edmonds
- Mountlake 9 Cinema: Located in the city of Mountlake Terrace

Tours

North County: (*Arlington, Granite Falls, Lake Stevens, Marysville, Stanwood, Darrington*)

- U.S. Marine Corporation: Located in the city of Arlington

East County: (*Monroe, Snohomish, Sultan, Index*)

- Henry M. Jackson Hydroelectric Project: Located in the city of Sultan

Central County: (*Mukilteo, Everett, Mill Creek*)

- Boeing Tour Center: Located in the city of Everett
- Everett Naval Station: Located in the city of Everett
- Buse Timber & Sales, Inc: Located in the city of Everett

Sources Used

1. **Family Fun in Snohomish County**. A Resource Guide to Activities and Outdoor Adventures, plus Tons of Useful Information. Published by the Early Childhood/Child Care Committee, a standing committee of the Snohomish County Children’s Commission. Support provided by Snohomish County Human Services Division of Children and Youth, Office of Children’s Affairs. 2001-2001. All pages used, resources listed on page39.

2. **2001 Comprehensive Park and Recreation Plan for Snohomish County**. Snohomish County Department of Parks and Recreation. Focus spent on chapters 3, 5 and 6. www.co.snohomish.wa.us/parks/.

3. **National Park Land Standards**. The National Recreation and Park Associations. www.ci.cedar-park.tx.us/parks/park_standards.html

4. **City of Arlington:** (360) 435-5785
5. **City of Darrington** (360) 436-1131
6. **City of Everett** (425) 257-8700
7. **City of Gold Bar** (360) 793-1101
8. **City of Granite Falls** (360) 691-6087
9. **City of Index** (360) 793-2488
10. **City of Lake Stevens** (425) 334-1012
11. **City of Marysville** (360) 651-5000
12. **City of Mill Creek** (425) 745-1891
13. **City of Monroe** (360) 794-7400
14. **City of Mukilteo** (425) 355-4141
15. **City of Mountlake Terrace** (425) 670-3874
16. **City of Snohomish** (360) 568-3115
17. **City of Stanwood** (360) 629-2181
18. **City of Sultan** (360) 793-2231

This page intentionally left blank.