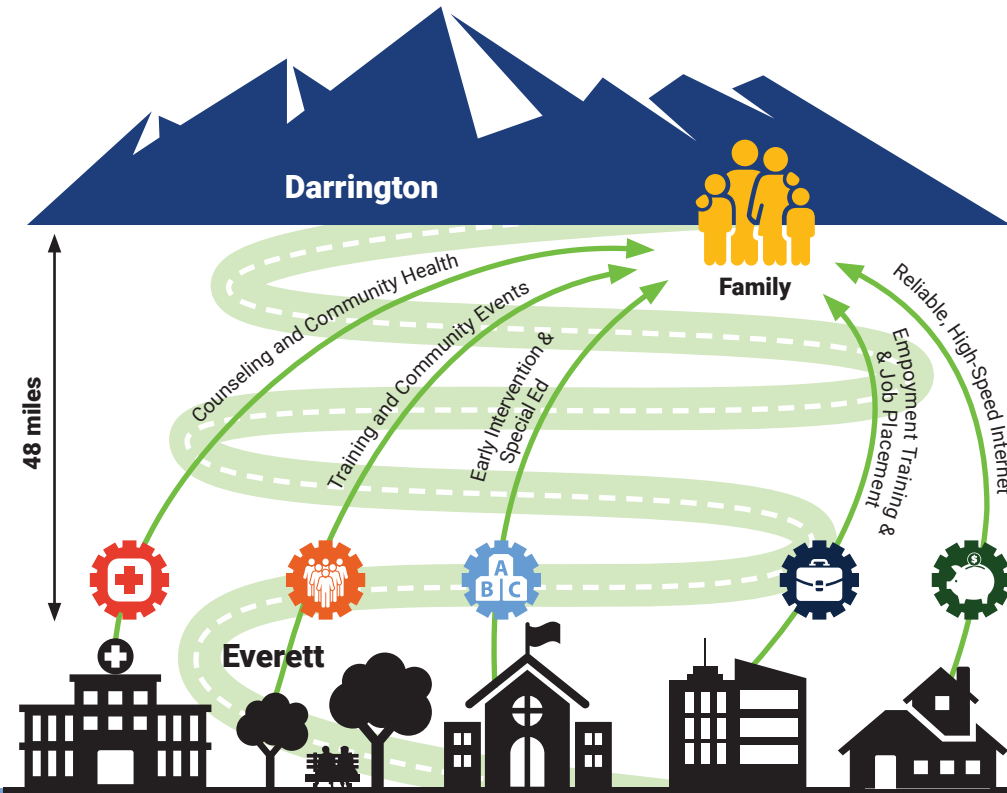


# NORTH COUNTIES' COMMUNITY COLLABORATIVE

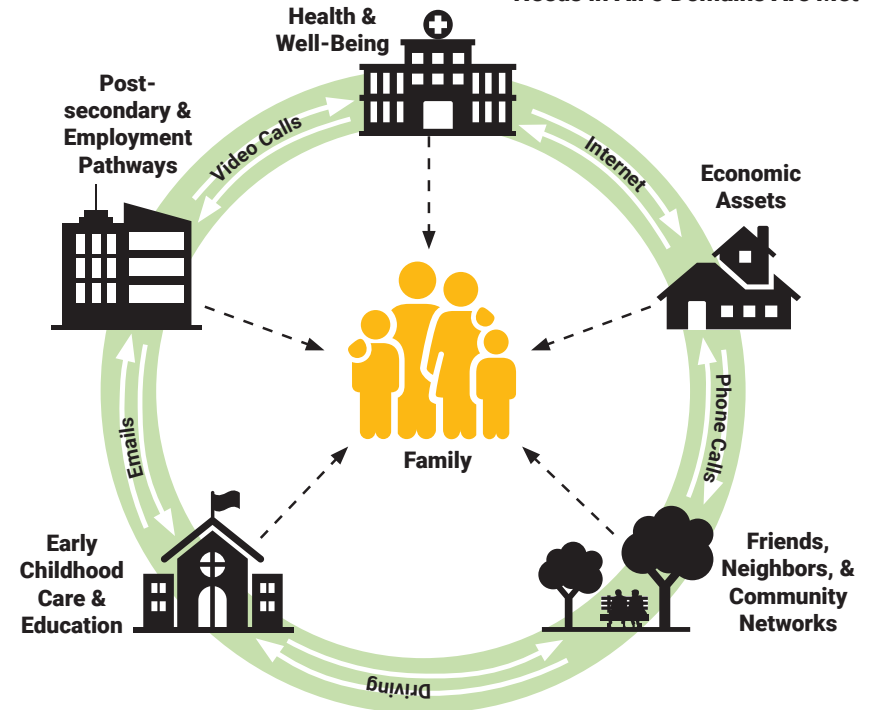
## HOW THE COLLABORATIVE WORKS



## CORE FAMILY EXPERIENCE



Needs in All 5 Domains Are Met



Darrington is a small, rural community that is geographically isolated. The primary barriers for this community are the distance to services, limited local services, inconsistent Internet connectivity, and minimal public transportation. North Counties' Community Collaborative aims to better align services around a 2-Generational approach, reduce barriers to accessing local services, and bring new services to Darrington.

Currently, the Collaborative partners meet monthly and commitments have been made to both expand local services and bring new services to Darrington families. The implementation model continues to evolve but priorities include:

- Reliable high-speed internet in homes, which is not currently available. The collaborative is funding a significant portion of the infrastructure costs.
- Childcare stipends for families enrolled in post-secondary education or workforce training
- Events that embed services in spaces families already use and bring multiple services to one location
- In-home therapy and early invention services for children birth to three
- Community family nights to increase social connections

North Counties' Community Collaborative will support families in accessing services that are currently offered, enable additional services to be offered locally, and identify gaps of services that families need. The Collaborative will identify and support partners within all five focus areas in order to surround families in their community with a holistic, 2-Generational approach.

### ANTICIPATED OUTCOMES

1. Child is ready for school & caregivers are empowered as their children's primary advocates.
2. Caregiver pursues post-secondary learning and/or employment aspirations.
3. Family is equipped and supported to reach their best physical, mental, and emotional health.
4. Family becomes a connector and community resource for others.
5. Family is financially stable.

### COLLABORATIVE PARTNERS

Sauk-Suiattle Indian Tribe  
Darrington Pharmacy  
Darrington Family Dental  
Darrington Clinic  
Coastal Community Bank  
Darrington Public Schools  
The Arc of Snohomish County

Sno-Isle Regional Library-  
Darrington Branch Workforce  
Snohomish Darrington Internet  
Users Association  
North Counties' Family Services  
Kid's Place Early Learning Center  
Sherwood Community Services

Darrington Food Bank  
United Way of  
Snohomish County  
Darrington Family Outreach  
Goodwill  
Stilly Valley Health Connections